

# TROUBLESHOOTING GUIDE

## POSTMIX CHECKLIST

If nothing happens when dispensing valve is operated:

### If it is all valves:

- Is the KEY SWITCH for electrical power on?
- Is the electrical cord of dispenser plugged in?
- Has the circuit breaker in the panel tripped off?

### If it is only one valve not working:

Place call for service technician.

### If only carbonated water is dispensed from

#### nozzles:

- Is B.I.B. empty?
- Is B.I.B. connector properly and securely attached?
- Is CO2 tank empty? (See image, gauge is in the red)

### If only plain water is dispensed from all

#### nozzles:

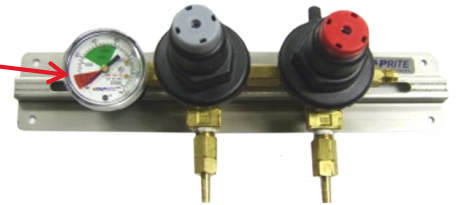
- Are you out of CO2 ?
- Did you just replace CO2 tank? If yes, run soda water (approx. 2 litres) through system.

### If only syrup and CO2 is dispensed from nozzles:

- Is carbonator electrical cord plugged in?
- Has a circuit breaker tripped off?
- Has the water been turned off to the carbonator or the building?

### If product is foaming and spitting:

- Is B.I.B. empty?
- Is carbonator electrical cord plugged in?
- Is the water to carbonator turned on?
- Is the nozzle of dispensing valve clean?
- Is the condenser of the cooling unit dirty or blocked? *\*If electrically cooled. (Check the finished drink temperature. Must be between 4.4°C & 1.1°C without ice.)*



### If the dispensed drink is too sweet:

- Is the valve properly ratio'd? (*ratio of syrup to soda/water*)
- Is the carbonator plugged in?
- Is water to carbonator turned on?
- Did you just replace CO2 tank? If yes, run soda water (approx. 2 litres) through

### If Finished Drink taste is flat:

- Are you out of CO2? (See image, gauge is in the red)
- Is dispenser cooling? *\*If electrically cooled. (Check the finished drink temperature. Must be between 4.4°C & 1.1°C without ice.)*
- Is there sufficient ice and is it properly distributed over cold-plate? *\*If ice cooled. (Check the finished drink temperature. Must be between 4.4°C & 1.1°C without ice.)*

### If Finished Drink is warm:

- If ICE COOLED is there sufficient ice and is it properly distributed over cold plate?
- If ELECTRICALLY COOLED is the condenser of the cooling unit dirty or blocked?

### If you hear CO2 escaping in area of CO2 tank:

- Is a B.I.B. empty?
- Insure there is a good washer between the connection on the CO2 tank and the hose / regulator.

**Please note: If the City Water is turned off, the system internally should also be turned off.**

